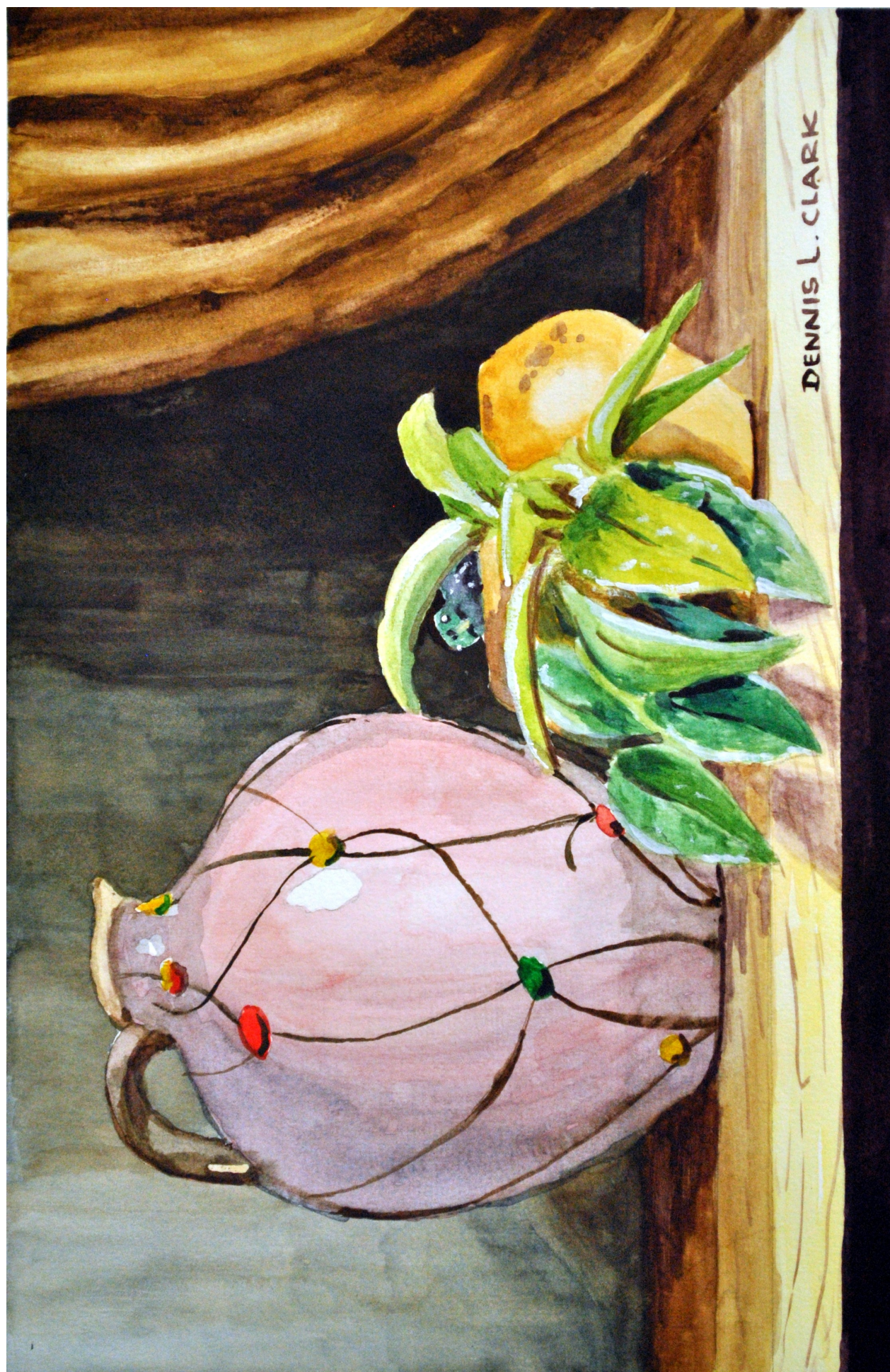


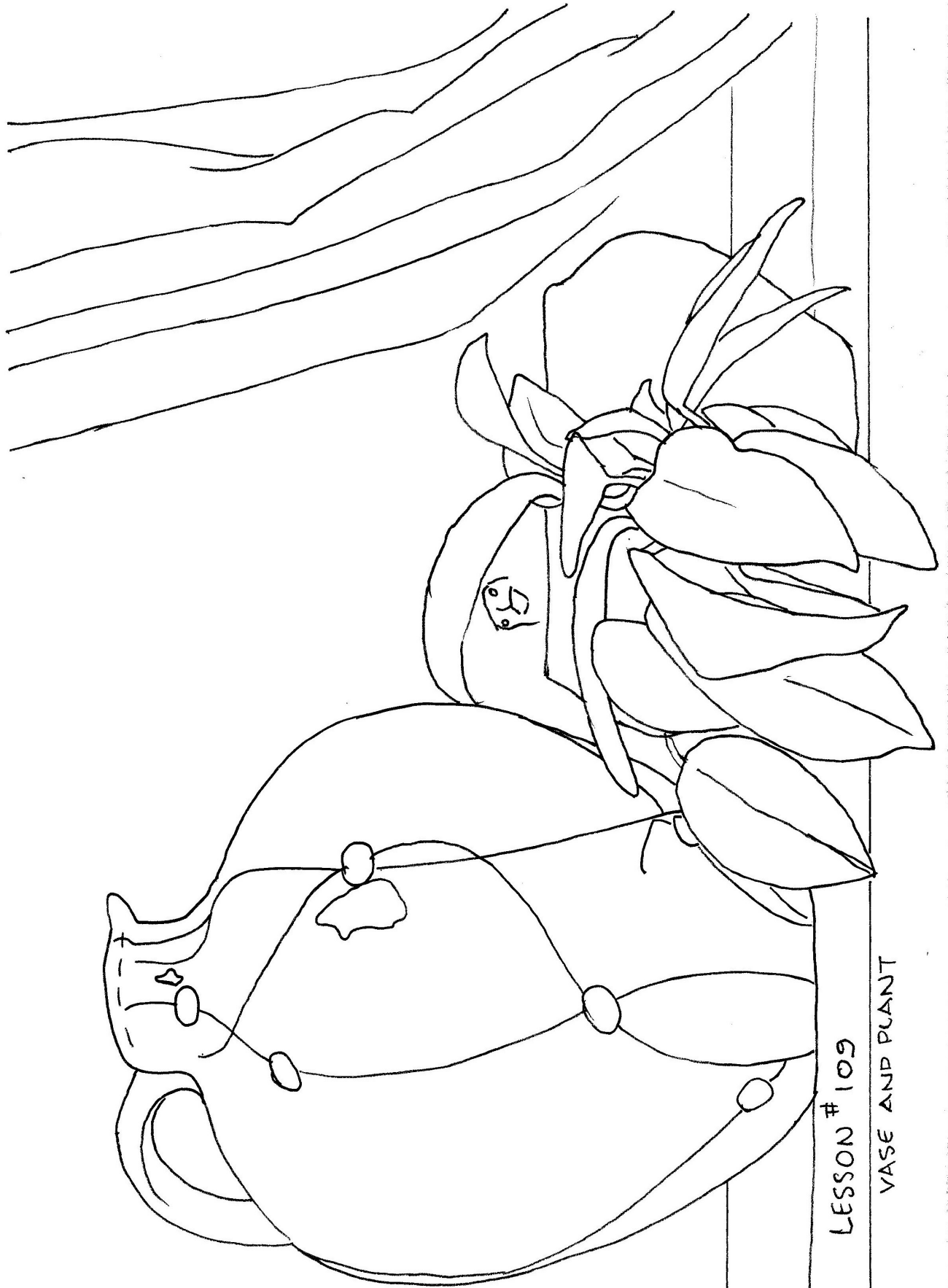
## Watercolour Painting



## Watercolour Painting



# Watercolour Painting



LESSON # 109

VASE AND PLANT

## INSTRUCTIONS

### Preparing the watercolour Paper:

I will be using a 305 mm x 406 mm (12 x 16") sheet of 420 gsm paper watercolour paper and the template is designed for this size. If, however, you prefer another size then you may either enlarge or reduce it to suit.

Measure accurately a border of 60mm around the paper and mark lightly with an HB pencil.

Carefully stick strips of masking tape along the outside edge of the pencilled rectangle with the one edge exactly on the pencil line

The painting area is roughly 280 x 180mm.

### How to transfer the template to the Watercolour Paper:

Print out the template (PDF document).

Turn it with the back of the sheet facing you and holding it against a window pane (with the sunlight behind) rub the pencil over the now visible lines with a soft pencil (3B or 4B) making sure that all the lines are completely covered with some rubbing on either side of the lines.

Turn the paper right way round again and with the rubbed face towards the watercolour paper and centre the template over the area to be painted. The A4 sheet overhangs the painting area slightly.

Take 2 pieces of masking tape and stick the top 2 corners securely to the watercolour paper so that the template will not move during the transfer process.

Now, with a 2H or HB pencil trace over the lines so that they are transferred to the watercolour paper underneath. Check every now and again to see if you have not left out any lines by carefully lifting up the lower section of the paper and comparing the upper image with the lower image.

**MAKE SURE YOU DO NOT MOVE THE TEMPLATE OUT OF ALIGNMENT.**

When you are satisfied that all the lines have been transferred carefully, go over the transferred lines lightly with the HB or B pencil. If you do not do this then you may lose some of the lines in the process of painting,

You are now ready for painting!