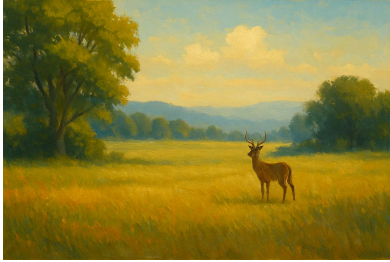
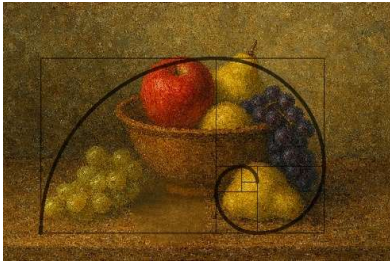


# Composition Rules Cheat Sheet



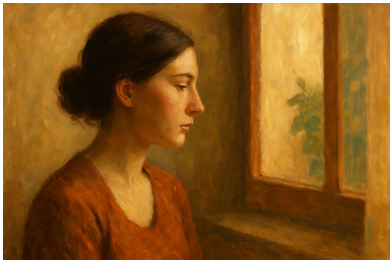
## Rule of Thirds

Divide the canvas into a 3×3 grid. Place key subjects on the intersections or along the lines to create balance and interest.



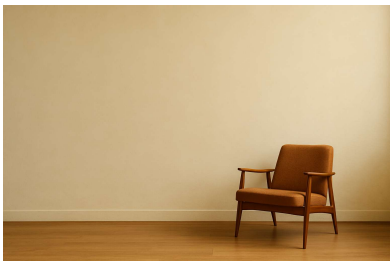
## Golden Ratio / Golden Spiral

Based on mathematics, this proportion leads the viewer's eye naturally through the composition in a flowing spiral or ratio of 1:1.618.



## Balance (Symmetry & Asymmetry)

Distributing elements so the artwork feels stable. Symmetry creates harmony, while asymmetry can create dynamic energy.



## Negative Space

Leaving empty space around the subject to enhance clarity, focus, and breathing room.



## Rhythm & Repetition

Repeating shapes, colours, or patterns to create movement, unity, and flow.



## Framing

Using natural frames (windows, trees, arches) to focus attention on the subject and add depth.



## Leading Lines

Using natural or implied lines (roads, rivers, arms, shadows, etc.) to guide the viewer's gaze toward the focal point.



## Visual Weight & Contrast

Using light/dark values, colour contrasts, or size contrasts to emphasise important areas.



## Simplification

Eliminating distractions and focusing only on the essential elements.



## Cropping

Cutting into the subject or zooming in to increase intimacy, drama, or impact.



## Depth

Layering elements to create a sense of three-dimensional space and perspective.



## Centered Composition

Placing the subject directly in the centre for emphasis, formality, or impact (often effective with symmetry).